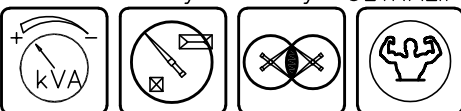


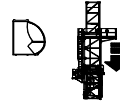
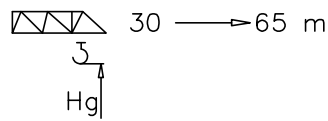
Power Control ASsys ACsys ULTRALIFT



FEM 1.001 - A4
EN 14439 - C25 - D25

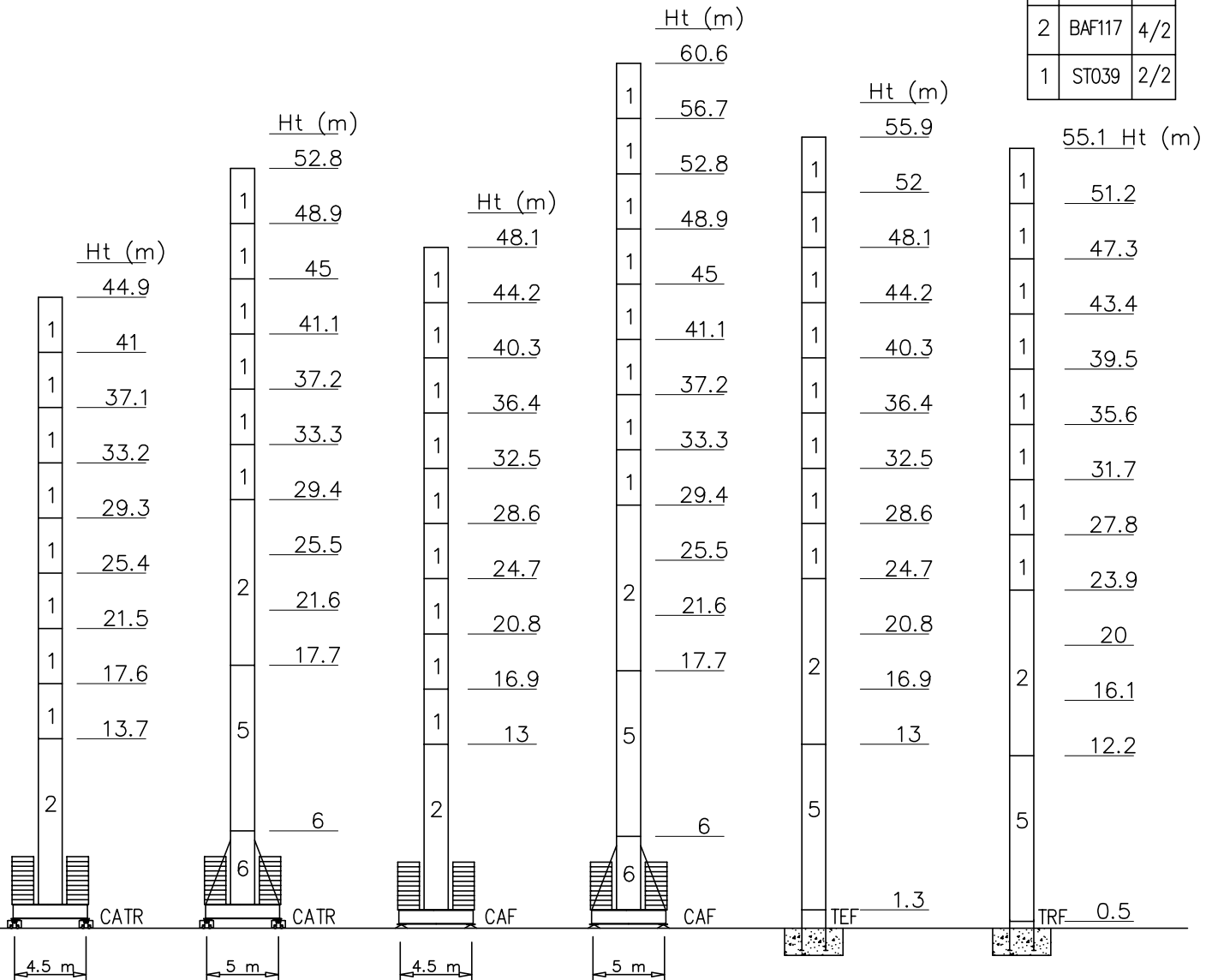
Torre/Reazioni – Masts/Reactions – Mat/Réactions – Maste/Eckdrücke – Măstil/Reacciones – Tramo/Reações

SK1700 FEM

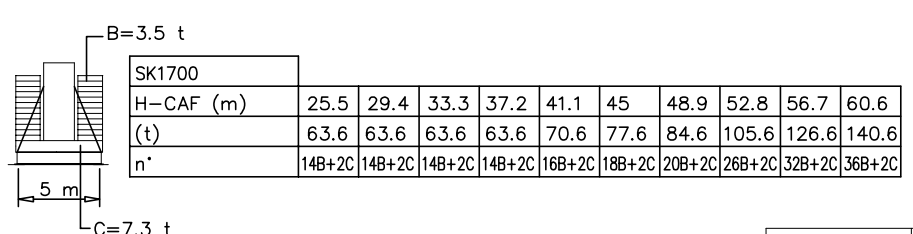
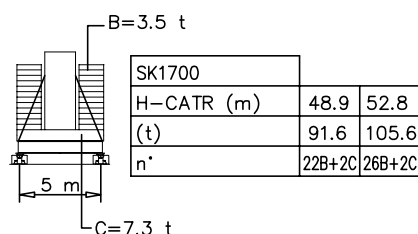
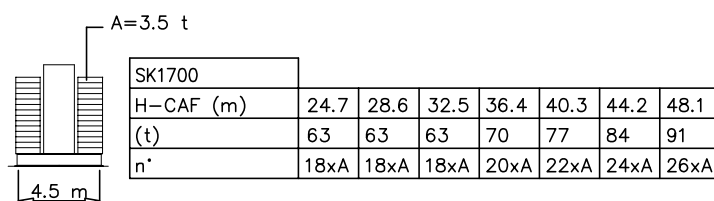
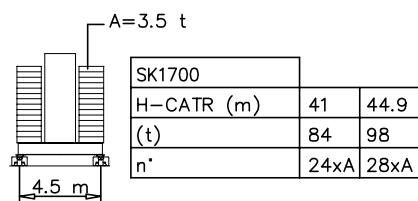


- Hg=Ht-1 m
- Hg=Ht-1.8 m

6	BCF052	2/4
5	BPF117	4/4
4	BPF039	4/4
3	ST117	2/2
2	BAF117	4/2
1	ST039	2/2

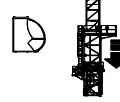
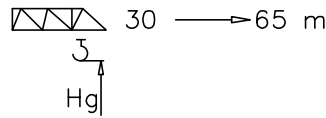


Peso zavorra – Ballast weight – Poids du lest – Ballastgewicht – Peso de lastre



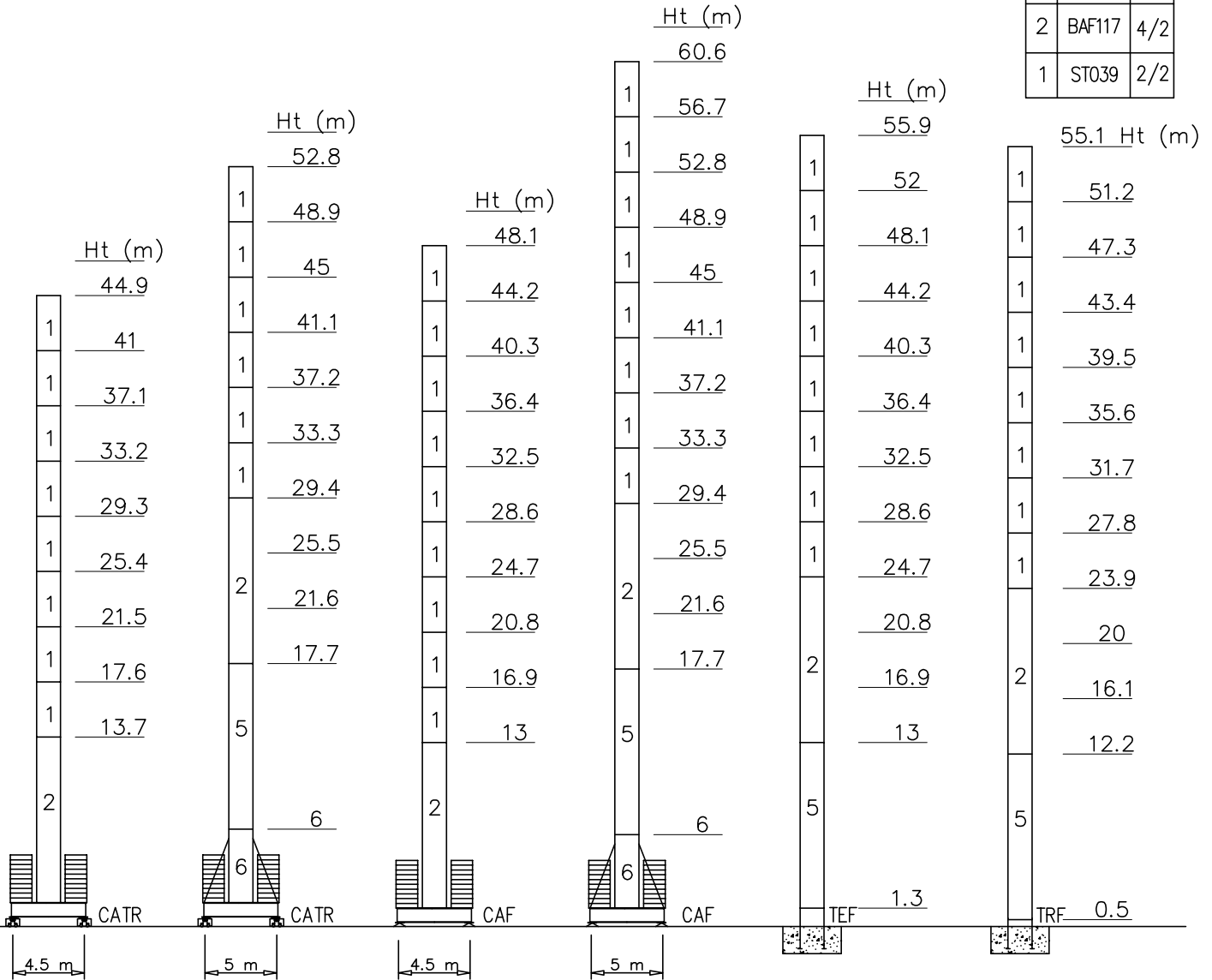
Torre/Reazioni - Masts/Reactions - Mat/Réactions - Maste/Eckdrücke - Măstil/Reacciones - Tramo/Reações

SK1700 EN14439-C25

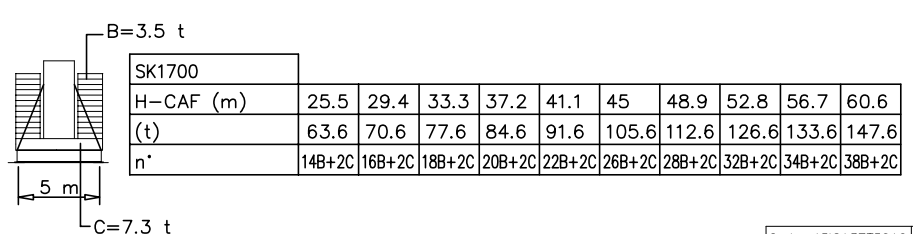
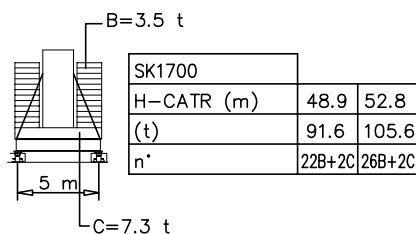
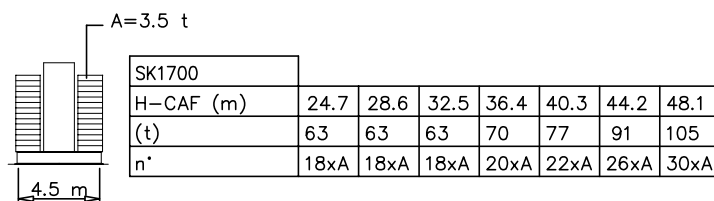
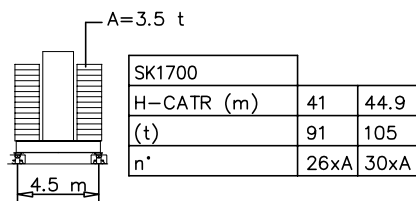


- Hg=Ht-1 m
- ◻ Hg=Ht-1.8 m

6	BCF052	2/4
5	BPF117	4/4
4	BPF039	4/4
3	ST117	2/2
2	BAF117	4/2
1	ST039	2/2

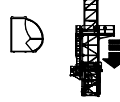
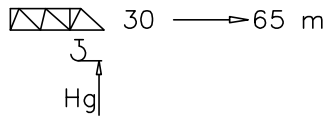


Peso zavorra - Ballast weight - Poids du lest - Ballastgewicht - Peso de lastre



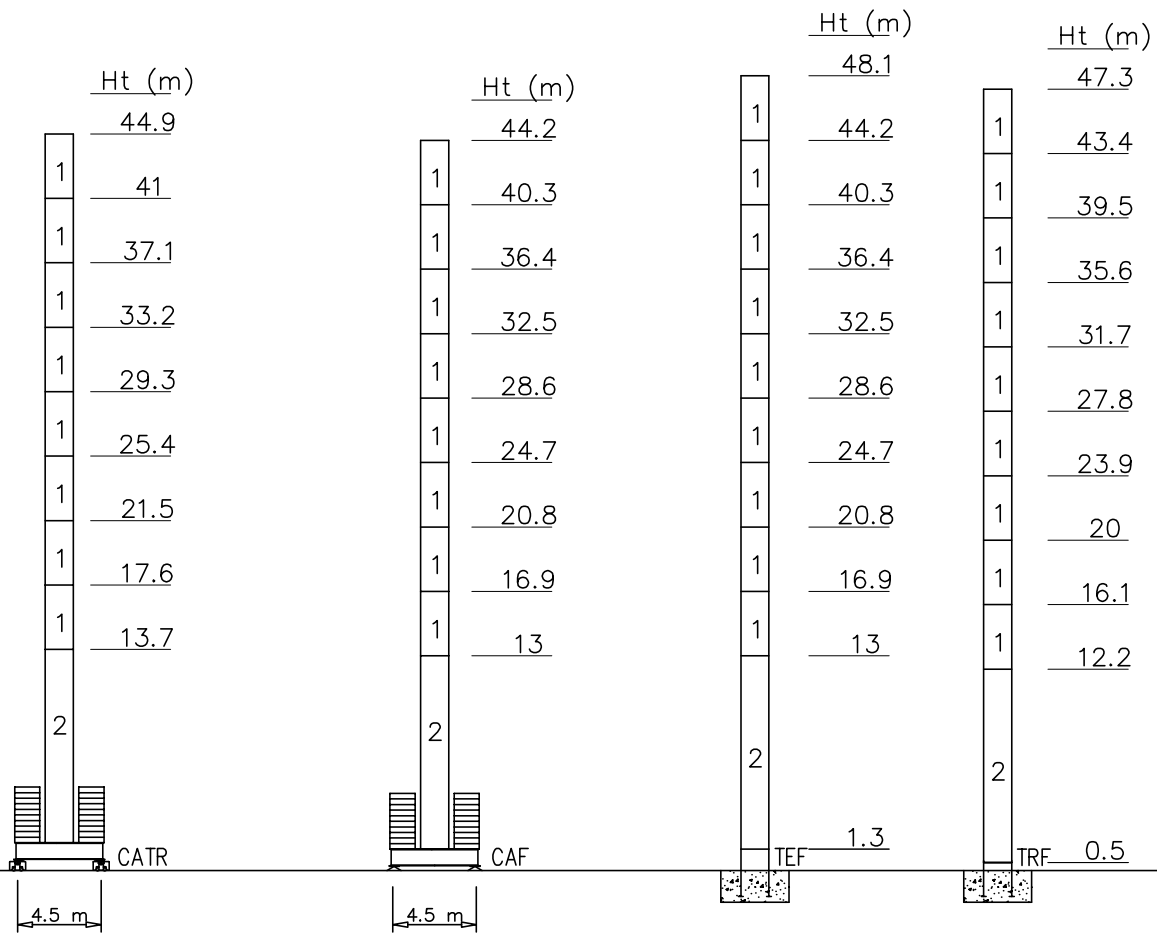
Torre/Reazioni – Masts/Reactions – Mat/Réactions – Maste/Eckdrücke – Măstil/Reacciones – Tramo/Reações

SK1700 EN14439-D25

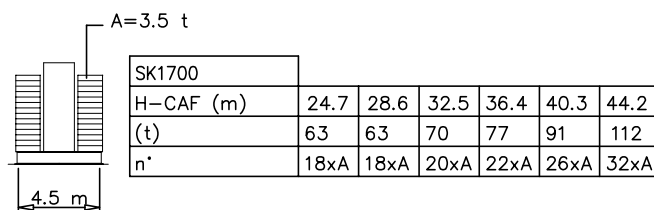
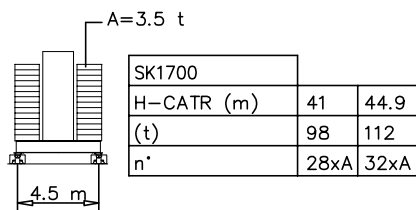


- Hg=Ht-1 m
- ◻ Hg=Ht-1.8 m

6	BCF052	2/4
5	BPF117	4/4
4	BPF039	4/4
3	ST117	2/2
2	BAF117	4/2
1	ST039	2/2

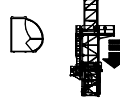
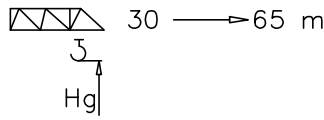


Peso zavorra – Ballast weight – Poids du lest – Ballastgewicht – Peso de lastre



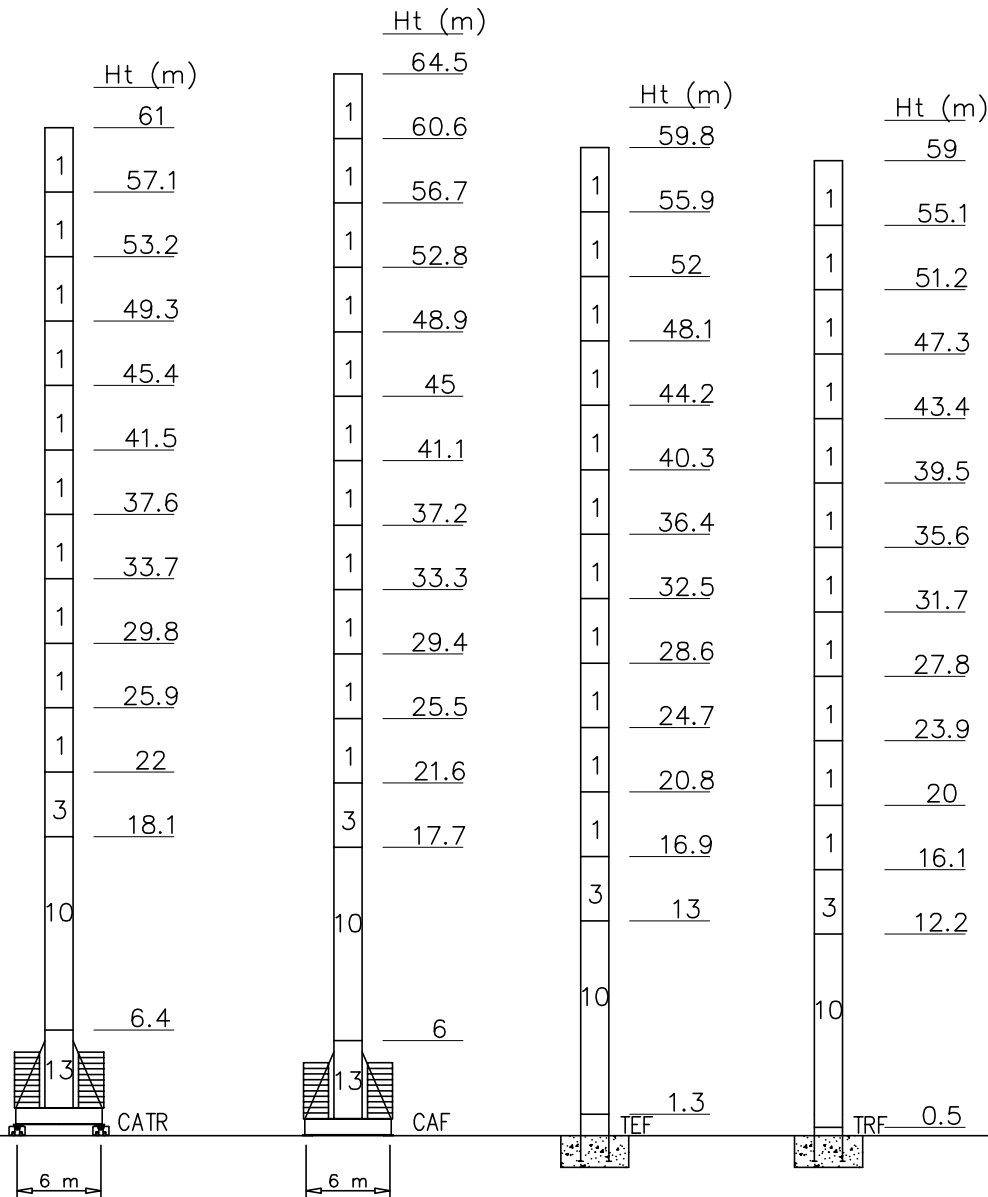
Torre/Reazioni - Masts/Reactions - Mat/Réactions - Maste/Eckdrücke - Măstil/Reacciones - Tramo/Reacções

SN2050 FEM

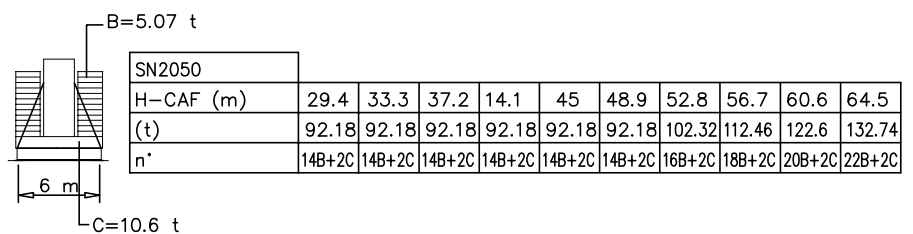
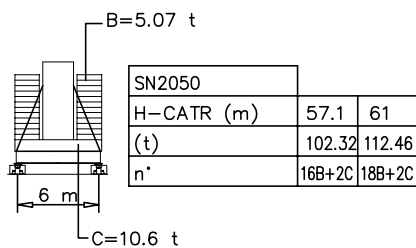


- Hg=Ht-1 m
- ◻ Hg=Ht-1.8 m

14	BCF052	2/4 M45
13	BAF052	2/4 M42
12	BPF117	4/4 M45-45
11	BNF117	4/4 M45-42
10	BOF117	4/4
9	BOF039	4/4
8	BO039	4/4
7	STRO39	2/2
6	SBR117	4/2
5	SBR039	4/2
4	SB117	4/2
3	SB039	4/2
2	ST117	2/2
1	ST039	2/2



Peso zavorra - Ballast weight - Poids du lest - Ballastgewicht - Peso de lastre

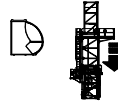


Torre/Reazioni - Masts/Reactions - Mat/Réactions - Maste/Eckdrücke - Măstil/Reacciones - Tramo/Reações

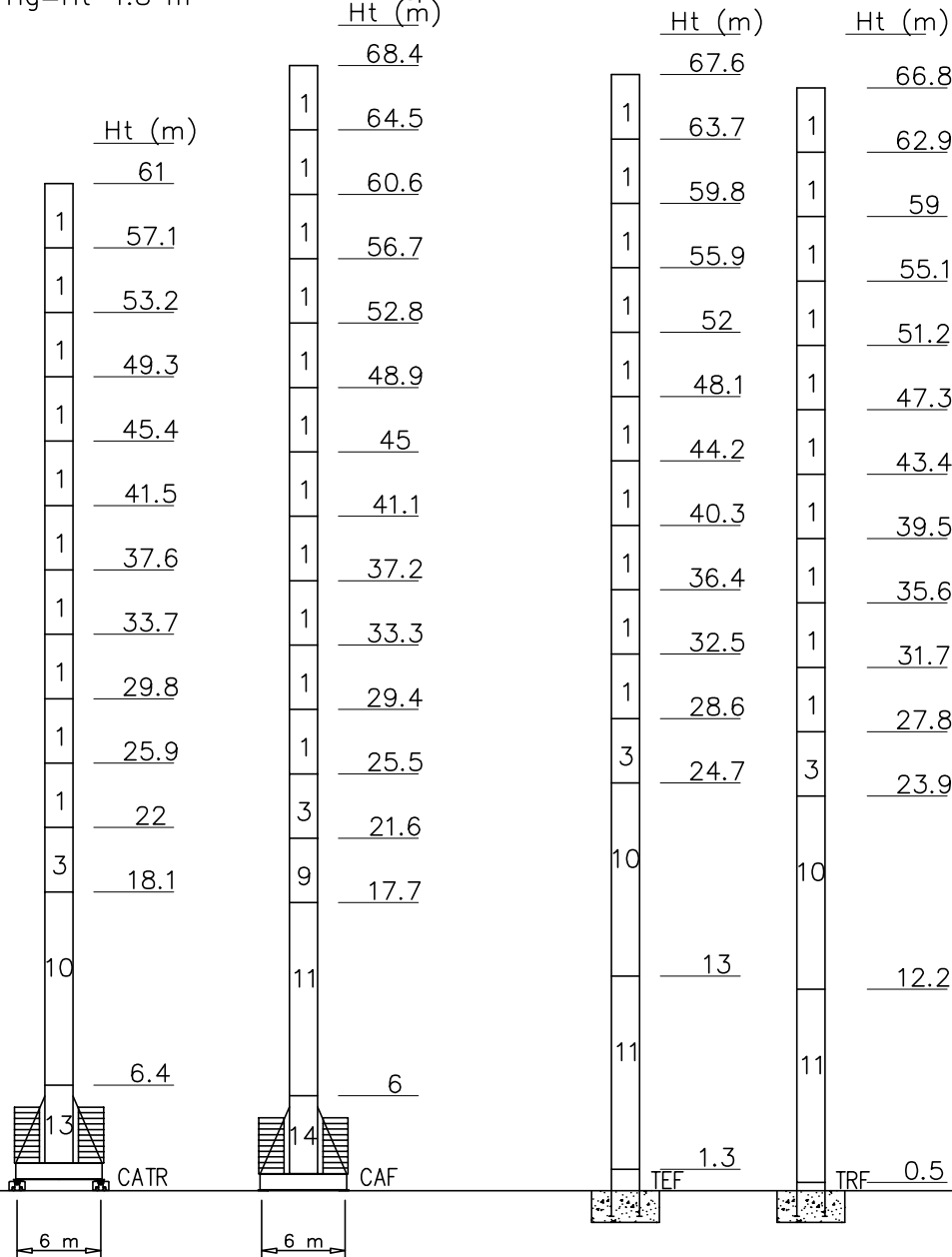
SN2050 FEM

○ Hg=Ht-1 m
 □ Hg=Ht-1.8 m

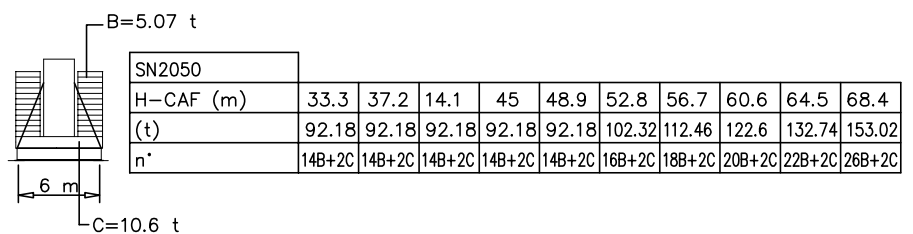
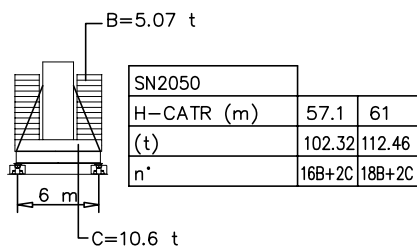
30 → 65 m



14	BCF052	2/4 M45
13	BAF052	2/4 M42
12	BPF117	4/4 M45-45
11	BNF117	4/4 M45-42
10	BOF117	4/4
9	BOF039	4/4
8	BO039	4/4
7	STRO39	2/2
6	SBR117	4/2
5	SBR039	4/2
4	SB117	4/2
3	SB039	4/2
2	ST117	2/2
1	ST039	2/2



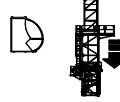
Peso zavorra - Ballast weight - Poids du lest - Ballastgewicht - Peso de lastre



Torre/Reazioni - Masts/Reactions - Mat/Réactions - Maste/Eckdrücke - Măstil/Reacciones - Tramo/Reacções

SN2050 EN14439-C25

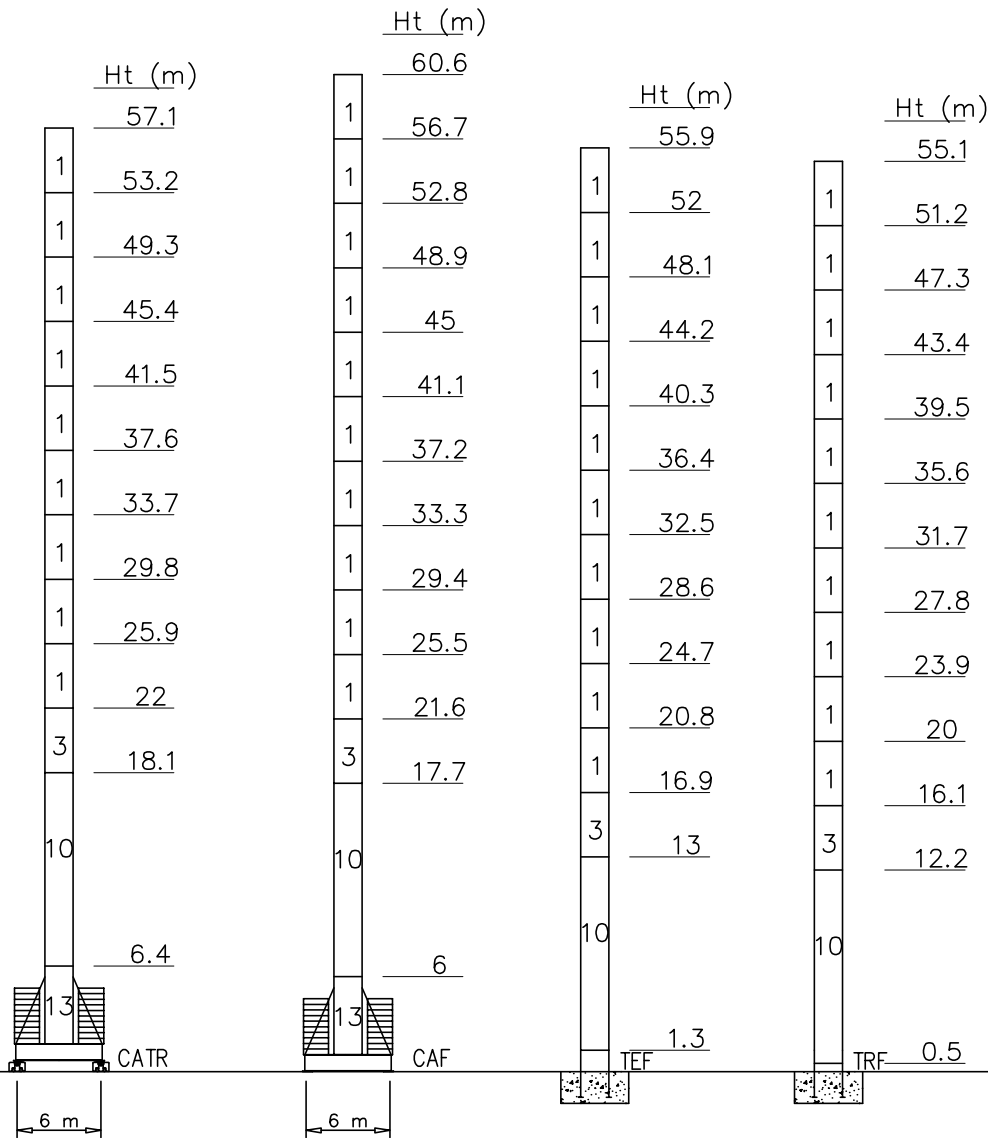
30 → 65 m



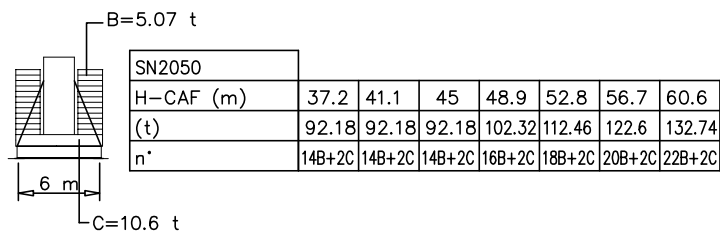
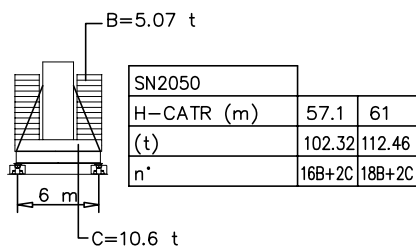
○ Hg=Ht-1 m
 □ Hg=Ht-1.8 m

Hg

14	BCF052	2/4 M45
13	BAF052	2/4 M42
12	BPF117	4/4 M45-45
11	BNF117	4/4 M45-42
10	BOF117	4/4
9	BOF039	4/4
8	BO039	4/4
7	STR039	2/2
6	SBR117	4/2
5	SBR039	4/2
4	SB117	4/2
3	SB039	4/2
2	ST117	2/2
1	ST039	2/2



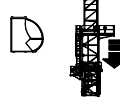
Peso zavorra - Ballast weight - Poids du lest - Ballastgewicht - Peso de lastre



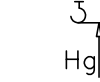
Torre/Reazioni - Masts/Reactions - Mat/Réactions - Maste/Eckdrücke - Măstil/Reacciones - Tramo/Reacções

SN2050 EN14439-C25

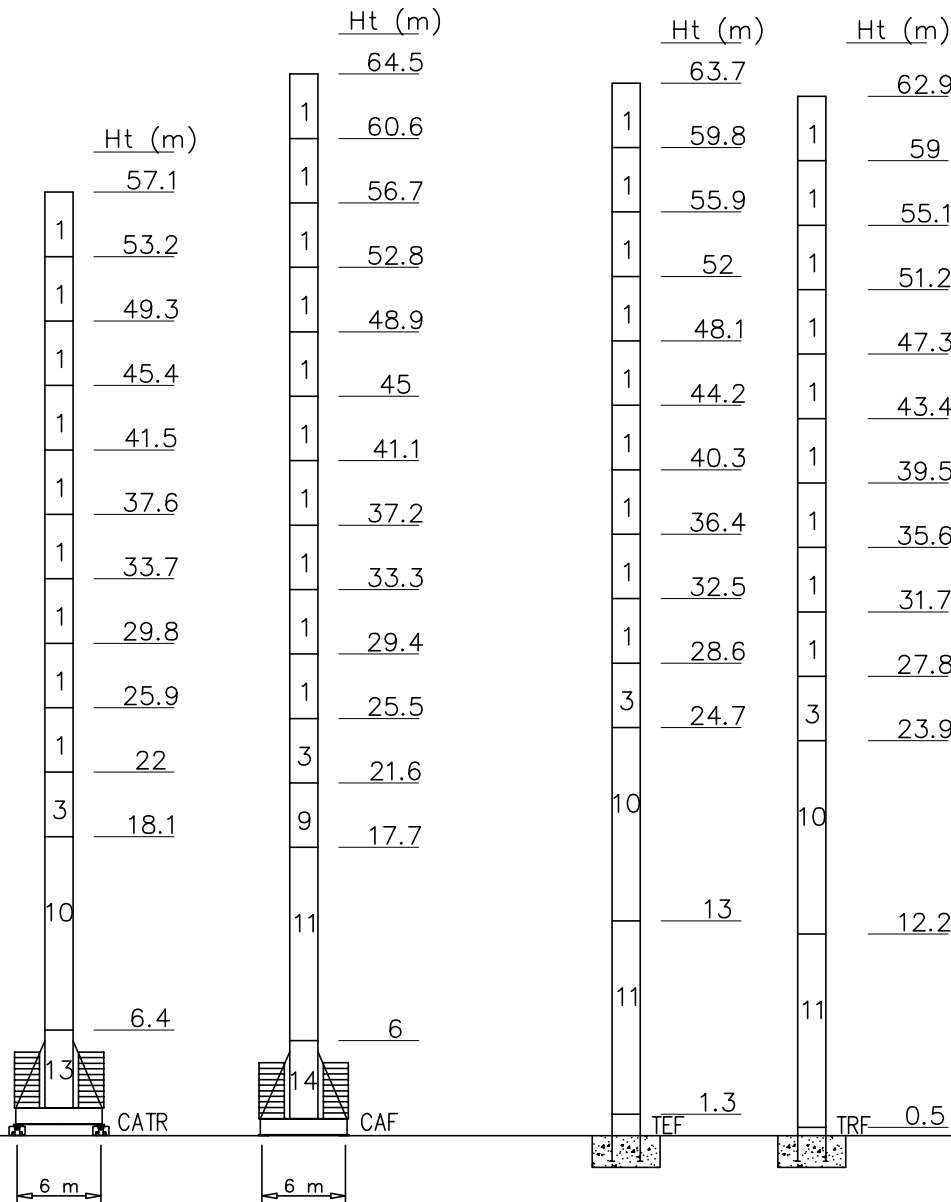
30 → 65 m



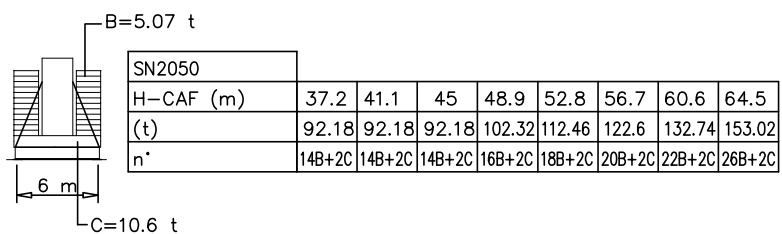
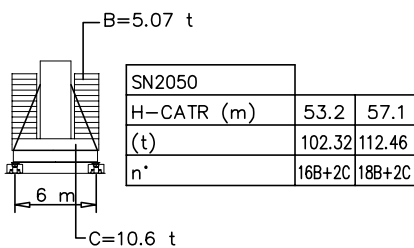
○ Hg=Ht-1 m
 □ Hg=Ht-1.8 m



14	BCF052	2/4 M45
13	BAF052	2/4 M42
12	BPF117	4/4 M45-45
11	BNF117	4/4 M45-42
10	BOF117	4/4
9	BOF039	4/4
8	BO039	4/4
7	STRO39	2/2
6	SBR117	4/2
5	SBR039	4/2
4	SB117	4/2
3	SB039	4/2
2	ST117	2/2
1	ST039	2/2

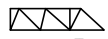


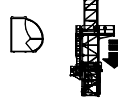
Peso zavorra - Ballast weight - Poids du lest - Ballastgewicht - Peso de lastre



Torre/Reazioni - Masts/Reactions - Mat/Réactions - Maste/Eckdrücke - Măstil/Reacciones - Tramo/Reacções

SN2050 EN14439-D25

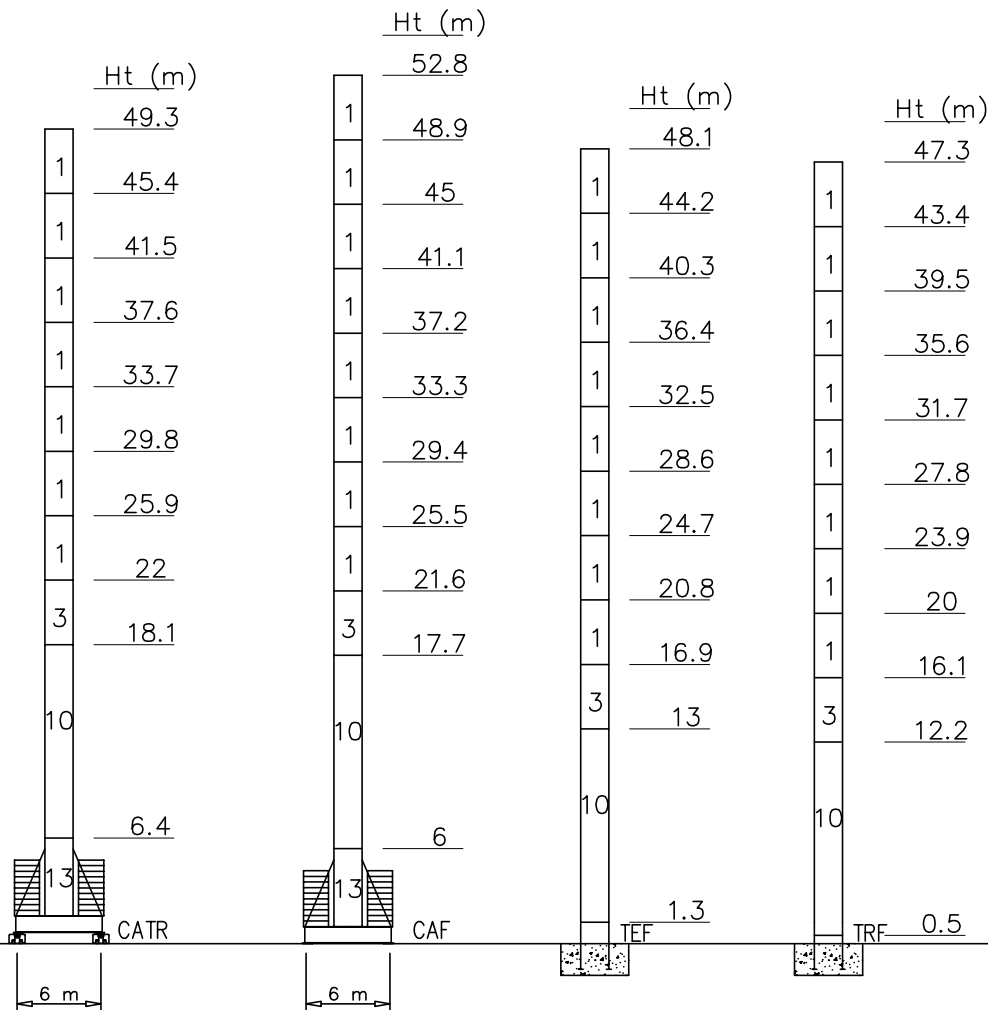
 30 → 65 m



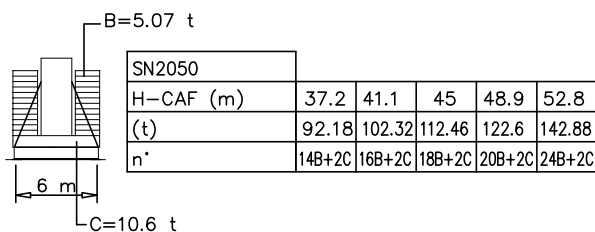
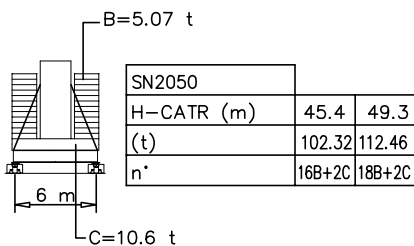
○ Hg=Ht-1 m
 □ Hg=Ht-1.8 m

Hg

14	BCF052	2/4 M45
13	BAF052	2/4 M42
12	BPF117	4/4 M45-45
11	BNF117	4/4 M45-42
10	BOF117	4/4
9	BOF039	4/4
8	BO039	4/4
7	STR039	2/2
6	SBR117	4/2
5	SBR039	4/2
4	SB117	4/2
3	SB039	4/2
2	ST117	2/2
1	ST039	2/2

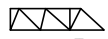


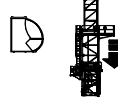
Peso zavorra - Ballast weight - Poids du lest - Ballastgewicht - Peso de lastre



Torre/Reazioni - Masts/Reactions - Mat/Réactions - Maste/Eckdrücke - Măstil/Reacciones - Tramo/Reações

SN2050 EN14439-D25

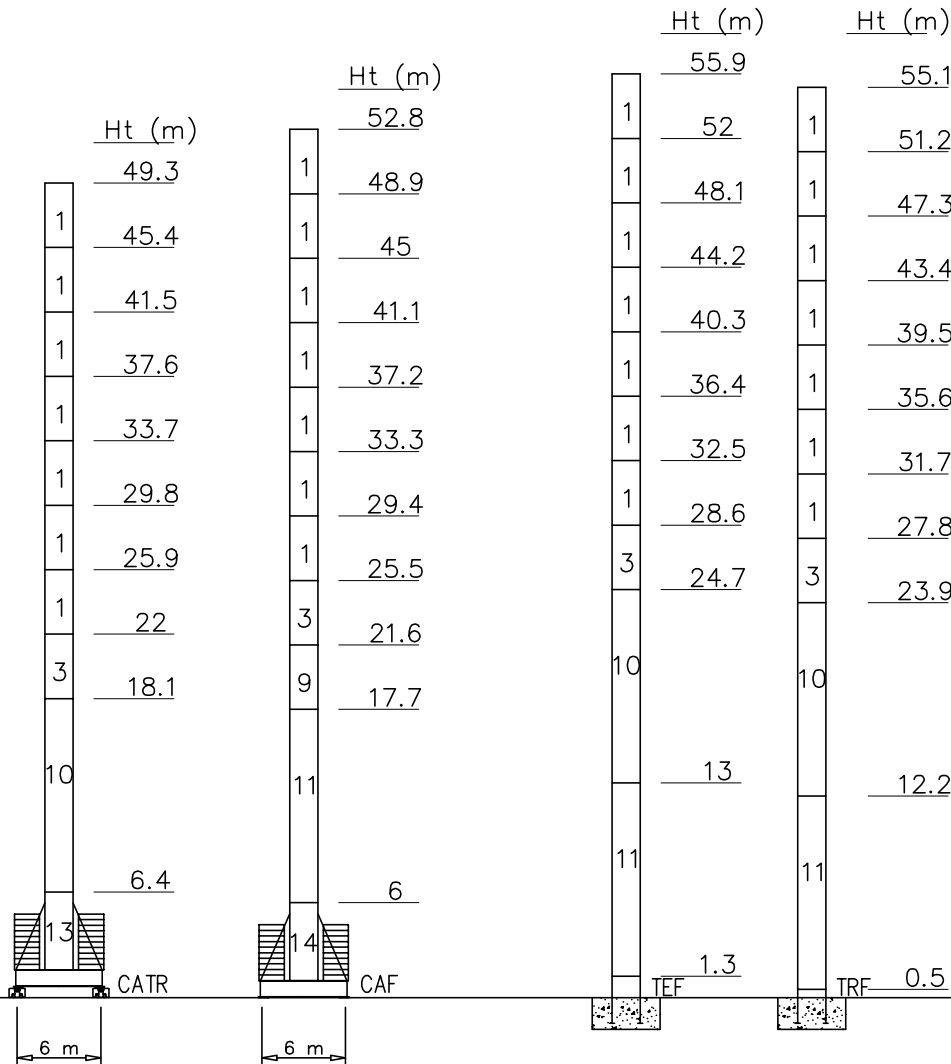
 30 → 65 m



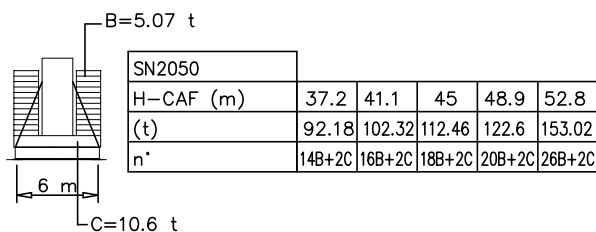
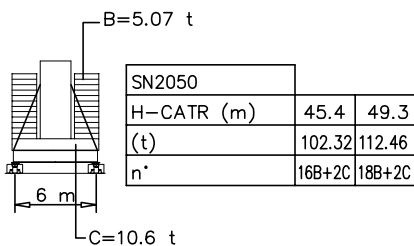
○ Hg=Ht-1 m
 □ Hg=Ht-1.8 m

Hg

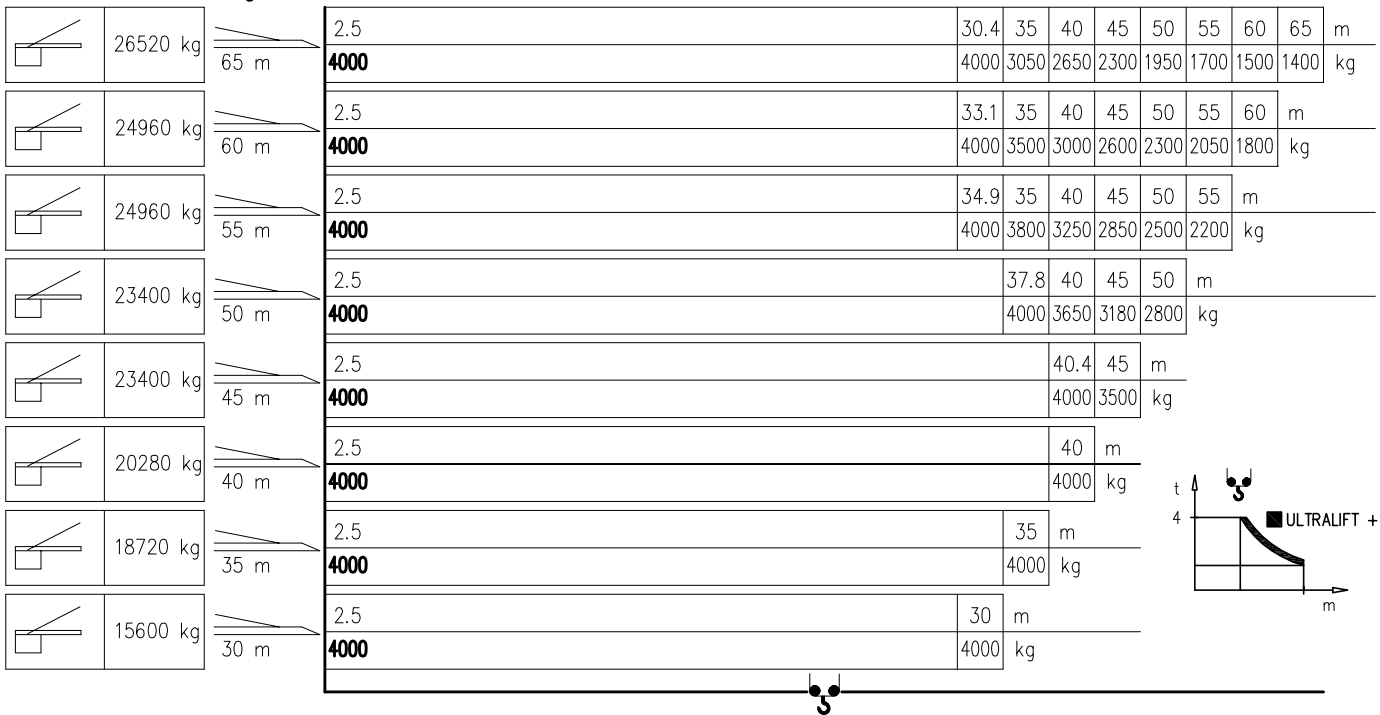
14	BCF052	2/4 M45
13	BAF052	2/4 M42
12	BPF117	4/4 M45-45
11	BNF117	4/4 M45-42
10	BOF117	4/4
9	BOF039	4/4
8	BO039	4/4
7	STRO39	2/2
6	SBR117	4/2
5	SBR039	4/2
4	SB117	4/2
3	SB039	4/2
2	ST117	2/2
1	ST039	2/2



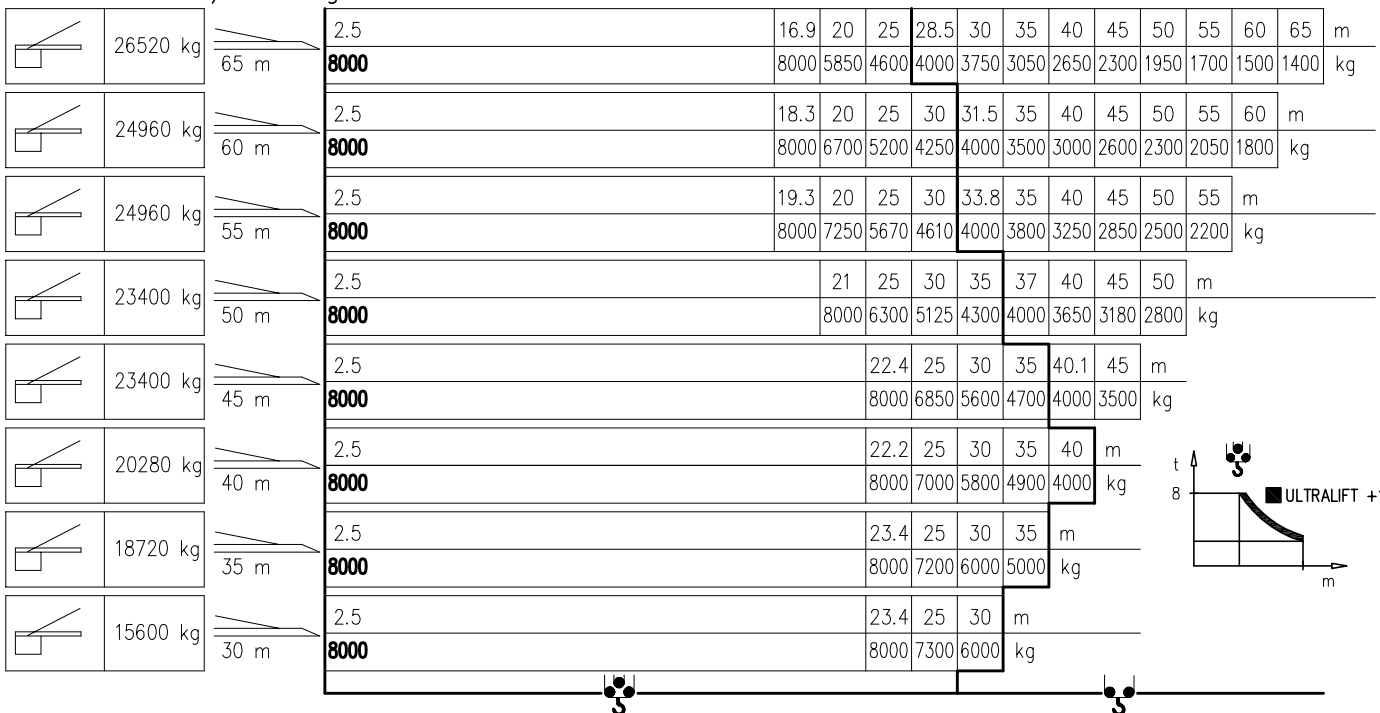
Peso zavorra - Ballast weight - Poids du lest - Ballastgewicht - Peso de lastre



Pmax 4000 kg



Pmax 8000/4000 kg



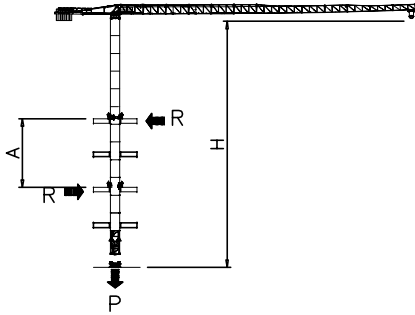
PESI E INGOMBRI – PACKING LIST – LISTE DE COLISAGE – GEWICHT UND ABMESSUNGEN

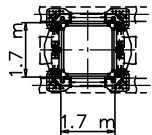
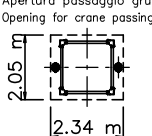
Denominazione Description	Disegno Draw	Pezzi Pieces	Dimensioni-Dimensions (mm)			Peso-Weight (kg)			
			L	W	H	Unit	Total		
Elemento di braccio Jib element Elément de èche Elemento de flecha	n°14		1	5500	1480	2290	2400	-	
	n°13		1	5300	1200	2170	1670	-	
	n°12		1	5280	1200	2170	1400	-	
	n°11		1	5270	1200	2150	1150	-	
	n°10		1	5260	1200	2150	900	-	
	n°9		1	5260	1200	2120	800	-	
	n°8		1	5240	1200	2100	700	-	
	n°7		1	5225	1200	2060	635	-	
	n°6		1	5200	1200	1630	500	-	
	n°5		1	5160	1200	1630	370	-	
	n°4		1	5140	1200	1610	350	-	
	n°3		1	5110	1200	1610	250	-	
	n°2		1	5090	1200	1260	210	-	
	Punta braccio		1	700	1200	500	55	-	
Contorbraccio completo Complete counterjib Contreflèche complète Contraflecha completa		1	12560	1810	1480	5650	-		
Gruppo girevole Slewing group Table tournante Grupo giratorio	SK1700		1	2300	1810	2900	6000	-	
	SN2050		1	2450	1810	2900	6300	-	
Carrello Trolley Chariot Carretilla	P8		1	1600	1620	710	400	-	
Ballatoio con cabina Access balcony with cabin Porte cabine Balcòn corrido con cabina			1	2500	2150	2450	1000	-	
Blocchi contrappeso Counterweight block Contre-poids Bloques de contrapeso	VX32 VS15		VS15	1	1000	200	3550	1560	1560
			VX32	8	1000	400	3550	3120	24960

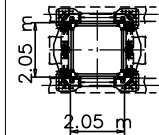
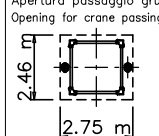
PESI E INGOMBRI – PACKING LIST – LISTE DE COLISAGE – GEWICHT UND ABMESSUNGEN

Denominazione Description	Disegno Draw	Pezzi Pieces	Dimensioni-Dimensions (mm)			Peso-Weight (kg)		
			L	W	H	Unit	Total	
Elemento di torre Mast element Elément de mât Elemento de torre	ST039	SK1700	-	3900	1785	1785	1750	-
	STR039	SN2050	-	3900	2110	2110	2320	-
	ST052	SK1700	-	5200	1785	1785	2250	-
		SN2050	-	5200	2110	2110	2850	-
	ST117	SK1700	-	11700	1785	1785	4690	-
		SN2050	-	11700	2110	2110	5790	-
	SB039	SK1700	-	3900	1785	1785	2100	-
	SB039	SN2050	-	3900	2110	2110	2710	-
	SB052	SK1700	-	5200	1785	1785	2600	-
		SN2050	-	5200	2110	2110	3350	-
	SB117	SK1700	-	11700	1785	1785	4830	-
	SBR117	SN2050	-	11700	2110	2110	7000	-
	BOF039	SK1700	-	3900	1785	1785	2450	-
	BPF039	SN2050	-	3900	2110	2110	3370	-
B0039								
BOF052	SK1700	-	5200	1785	1785	3390	-	
	SN2050	-	5200	2110	2110	3880	-	
BAF117	SK1700	-	11700	1785	1785	6920	-	
BOF117	SN2050	-	11700	2110	2110	8180	-	
BNF117								
BPF117								
Elemento di base Base element Mat de base Elemento de base	BAF052	SK1700	1	5200	2060	2060	3650	-
	BCF052	SN2050	1	5200	2260	2260	4040	-
Carro di base Base carriage Chassis de base Cruceta de base		4.5x4.5	1	6670	500	1260	3180	3180
		5x5	1	7550	670	780	2300	2300
		6x6	1	8870	670	780	2500	2500
		4.5x4.5	2	3100	500	1260	1400	2800
		5x5	2	3530	420	780	1060	2120
		6x6	2	4320	420	780	1200	2400
Puntoni di base Rafters Jambes de force Cabrios de base		5x5	4	4250	240	300	280	1120
		6x6	4	4560	420	300	420	1680
Elemento a perdere Disposable frame Chassis a perdre Bastidor desechable		SK1700	1	1840	1910	1910	1430	-
		SN2050	1	2600	2260	2260	2030	-
Elemento recuperabile Recoverable frame Chassis récupérable Bastidor recuperable		SK1700	1	1300	2170	2170	1720	-
		SN2050	1	1300	2620	2620	1860	-
Bogie di traslazione Driven bogie Boggie motorisée Balancin de traslaciòn			4	1160	700	600	700	2800
Blocco zavorra di base Base ballast block Lest de base Bloque de lastre		4.5x4.5	-	4400	1200	290	3500	-
		5x5	2	5300	1000	600	7300	14600
	6x6	2	6400	1200	600	10600	21200	
		5x5	-	4100	1600	300	3500	-
6x6		-	4800	2000	300	5070	-	
Corsoio di montaggio Climbing cage Cage de montage Jaula de montaje		SK1700	1	8300	2600	2500	6000	-
		SN2050	1	8300	2900	2700	6700	-

GRU IN CAVEDIO – TELESCOPAGE SUR DALLES – CLIMBING CRANE – KLETTERKRANE IM GEBAUDE



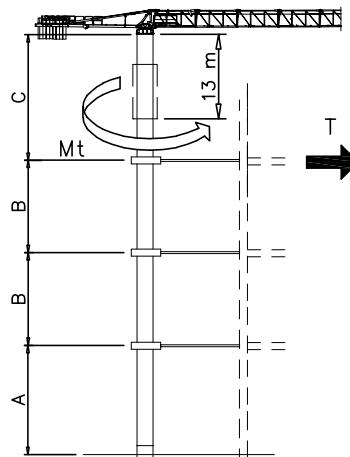
SK1700	H (m)	A (m)
	39	Min 9
Apertura passaggio gru Opening for crane passing 		Max 12

SN2050	H (m)	A (m)
	50.8	Min 9
Apertura passaggio gru Opening for crane passing 		Max 12

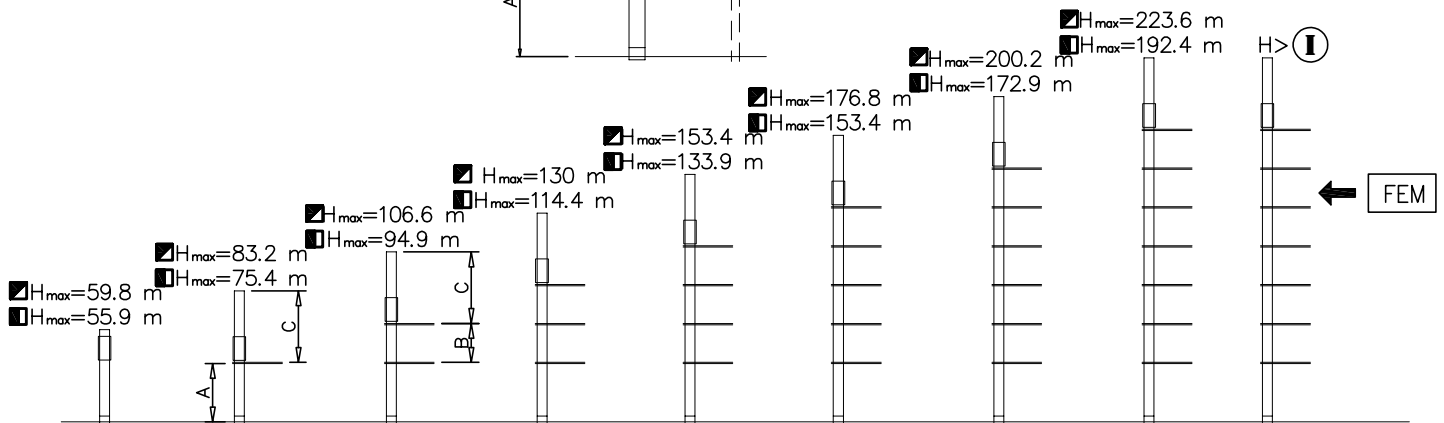
SOPRALZO IDRAULICO – TELESCOPABLE – EXTERNAL CLIMBING – KLETTERKRANE

FEM

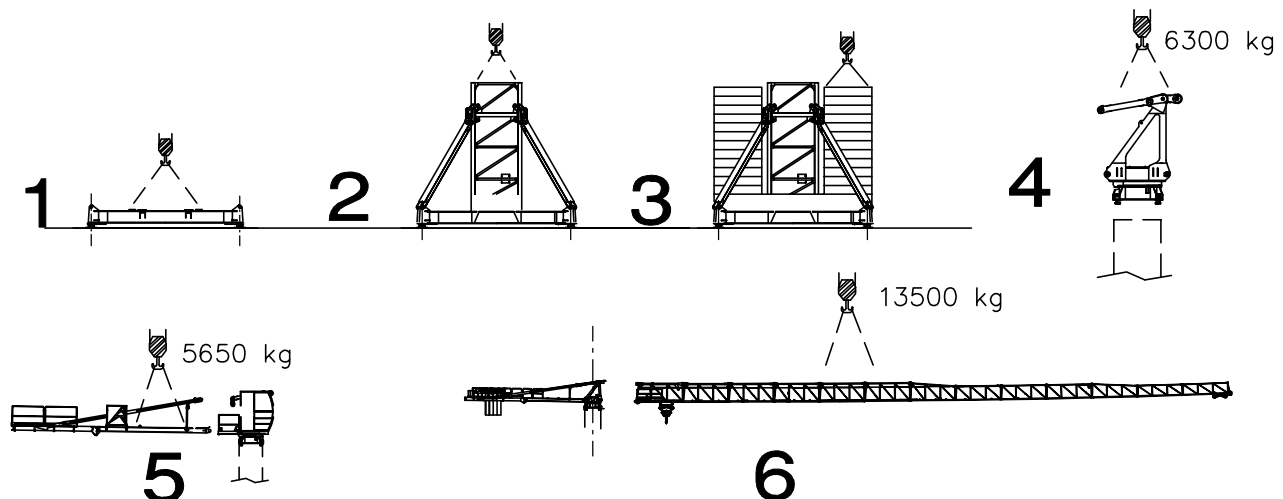
	SK1700
MAX C	32.5 m
B	19.5 m
A	42.9 m



	SN2050-M42	SN2050-M45
MAX C	36.4 m	36.4 m
B	23.4 m	23.4 m
A	46.8 m	54.6 m
		Hmax+7.8 m



Montaggio – Montage – Erection – Montage – Montaje – Montagem



Meccanismi – Mechanisms – Mécanismes – Antriebe – Mecanismos

Sollevamento V33.60 Hoisting Levage Heben Elevaciòn Elevaçao														V33.60 24 kW 40 kVA 240 m 570 m (L)
	m/min	2.5	15	27	43	56	71	1.2	7.5	13.5	21.5	28	35.5	
	t	4	4	4	2.5	1.7	0.8	8	8	8	5	3.4	1.6	

Sollevamento V45.90 Hoisting Levage Heben Elevaciòn Elevaçao														V45.90 33 kW 58 kVA 340 m 680 m (L)
	m/min	4	18	36	56	74	90	2	9	18	28	37	45	
	t	4	4	4	3	2	1	8	8	8	6	4	2	

Carrello Trolleying Distribution Katzfahren Distribuciòn Distribuiçao			0 → 80	m/min	4 kW	Potenza elettrica necessaria Puisance électrique nécessaire Necessary electric power Anschlusswert – Potencia
Rotazione Slewing Orientation Schwenken Orientaciòn Rotaçao			0 → 0,9	giri/min tr/min rp/min	4.4 kW @ 1200rpm n° 2 x 2.2 kW	
Traslazione Travelling Translation Kranfahren Traslaciòn Traslaçao			0 → 20	m/min	7.5 kW	

Rete elettrica – Réseau – Mains supply – Netzstrom – Red – Rede electrica	400V – 50 Hz
---	--------------

AFM Gru FMgru s.r.l.
via Emilia 11-29010 Pontenure PC ITALY
tel. 0523/510446 ric.aut. fax 0523/510365
www.fmgru.it e-mail: info@fmgru.com

FEM 1.001 – A4
EN 14439 – C25 – D25



Documento commerciale non contrattuale
Per tutte le informazioni tecniche riferirsi
alle corrispondenti istruzioni

Unverbindliches Vertriebsdokument.
Für technische Informationen, siehe die
entsprechenden Anweisungen.

This commercial document is not legally
binding. For any technical information, please
refer to the corresponding instructions.

Documento comercial no contractual
Para cualquier información técnica,
ver la noticia correspondiente.

Code: 15ICA37T50A0 P.15
Rev. 4 Data 03.07.17